



10 June 2026

Catholic Diocese of Auckland
Private Bag 47904
Ponsonby
Auckland 1144

Ref: 20100607

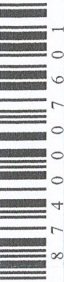
St Ignatius School, Long Drive, St Heliers – Pedestrian Safety Improvements

Kia ora,

In response to concerns raised by the community to give priority to people crossing on Long Drive outside St Ignatius School, we're proposing some safety improvements for people, especially tamariki walking to and from school.

What we're proposing:

- Installing an at grade zebra crossing on Long Drive near the intersection with Speight Road. The crossing will have a central pedestrian island which is a raised platform in the middle of a crossing that makes it safer to cross a road by breaking up the journey with a safe refuge area. The wide central pedestrian islands will also slow vehicle speeds by narrowing the lanes.
- Installing kerb ramps on both sides of the crossing. This will help people with strollers or wheelchairs move easily between the footpath and the road.
- Installing tactile pavers at the crossing points to guide people to and across the road safely.
- Upgrading the footpath on both sides of the zebra crossing.
- Creating a new indented parking section with three parking spaces on Long Drive for a pick up and drop off zone.
- Installing new high friction surfaces. This will help vehicles slow down when approaching the crossing by reducing the stopping distance when drivers are breaking.
- Installing new signage and painting new road markings to support the proposed changes.
- Removing the existing trees by the proposed location to help with driver visibility when approaching the crossing.
- Painting broken yellow lines on both sides of the zebra crossing and along the bend when turning into Long Drive from Challenger Street.
- To accommodate these safety improvements and visibility nine parking spaces will be removed.





20 Viaduct Harbour Avenue, Auckland 1010
Private Bag 92250, Auckland 1142, New Zealand
+64 9 355 3553 | at.govt.nz

Please refer to the drawing to see where the proposed changes will apply.

How this benefits your community

Auckland Transport cares for your safety. We want to make our roads safe for everyone, people walking, cycling, driving, and especially for our Tamariki. The proposed changes would create a safer road for everyone as they would:

- Provide a safe crossing point for everyone especially the tamariki.
- Improves safety for everyone using the crossing.
- Improves visibility for drivers approaching the crossing.
- Slow vehicle speed down.
- Create more parking for people to PUDO their children during peak times.

Share your thoughts up until Wednesday, 24 June 2026.

You can share your thoughts on the proposed changes by completing the online feedback form at:

haveyoursay.at.govt.nz/pedestrian-safety-improvements-on-long-drive-st-heliers

Or scan the QR code

You can also email ATEngagement@AT.govt.nz

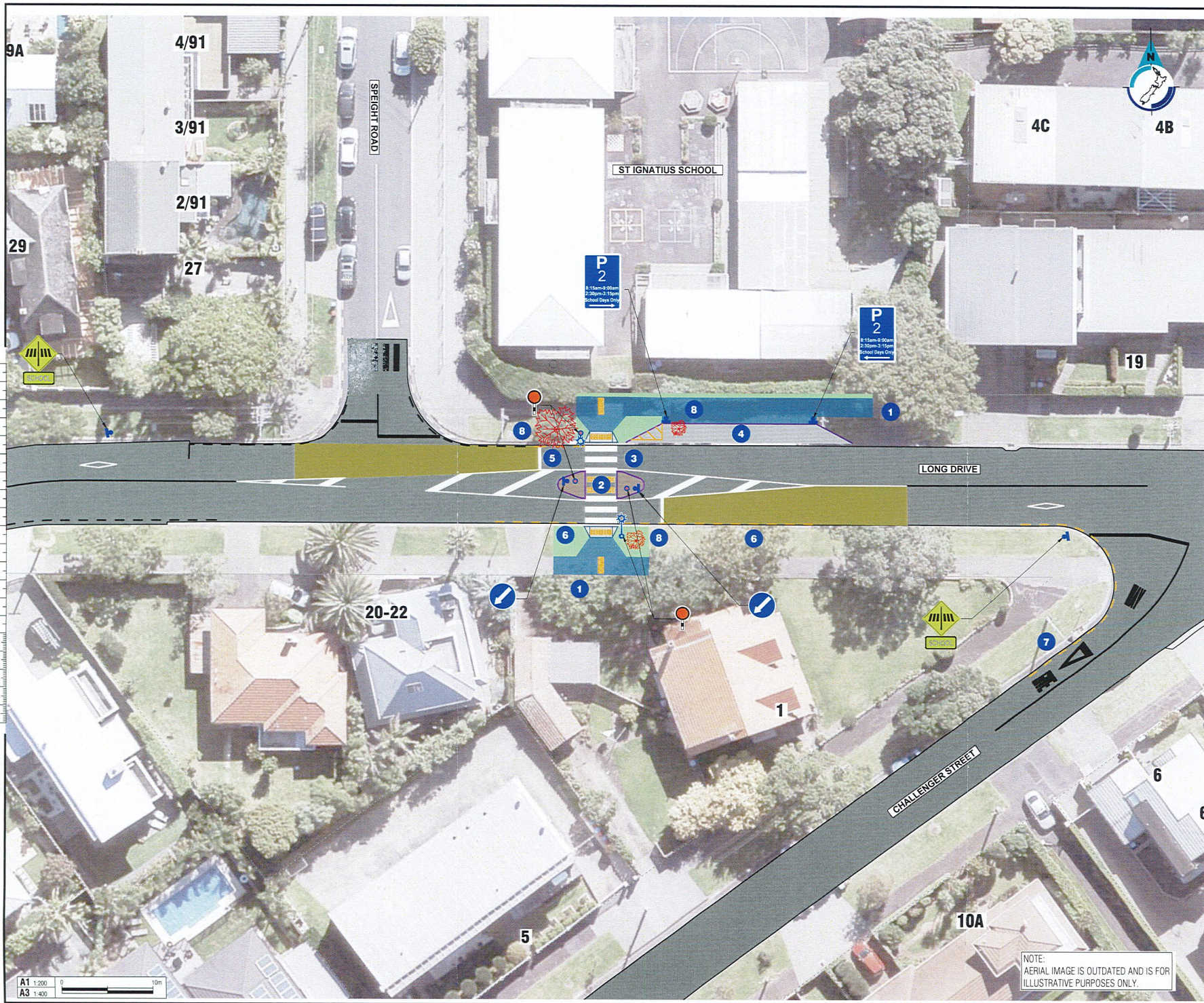


Reviewing feedback and deciding the next steps.

We'll post the outcome of this proposal and a summary of community feedback on our website. If you would like to receive updates, please subscribe with your email on the webpage linked above.

Ngā mihi,

Auckland Transport



- KEY**
- 1 NEW FOOTPATH
 - 2 NEW PEDESTRIAN REFUGE
 - 3 NEW PEDESTRIAN CROSSING
 - 4 NEW PICK UP / DROP OFF ZONE (3 PARKING SPACES)
 - 5 NEW NO STOPPING AT ALL TIMES YELLOW LINES (LOSS OF 3 PARKING SPACES)
 - 6 NEW NO STOPPING AT ALL TIMES YELLOW LINES (LOSS OF 5 PARKING SPACES)
 - 7 NEW NO STOPPING AT ALL TIMES YELLOW LINES (LOSS OF 1 PARKING SPACE)
 - 8 EXISTING TREE TO BE REMOVED

- LEGEND**
- EXISTING ROAD MARKING / KERBLINE
 - NEW KERB LINE
 - NEW YELLOW ROAD MARKING
 - NEW WHITE ROAD MARKING
 - NEW / RECONSTRUCTED FOOTPATH
 - NEW GRASS BERM
 - NEW TRAFFIC ISLAND
 - NEW ROAD SURFACE TREATMENT
 - REMOVED TREE
 - NEW / RELOCATED SIGN
 - NEW PRAM CROSSING
 - NEW TACTILE PAVERS
 - NEW STREET LIGHT



AUCKLAND TRANSPORT
LONG DRIVE, ST. HELIERS -
NEW PEDESTRIAN CROSSING

Status: FOR ENGAGEMENT			
Date: 02/04/2026			
A1 (Scale): 1:200	A3 (Scale): 1:400	Rev: A	
Drawing No: 2025-514_T030			